

WHEN I DIE

by Thom Luz

Production

Thom Luz and Bernetta Theaterproduktionen

Coproduction

Spielart Festival München, Gessnerallee Zürich, Südpol Luzern, Kaserne Basel, Theater Chur



Production

Bernetta Theaterproduktionen
Gabi Bernetta
Wasserwerkstrasse 96 | CH-8037 Zürich
+41 44 440 66 07 | +41 79 419 20 34

gabi.bernetta@bernetta.net
www.bernetta.net

Technical Director

Li Sanli
CH-8636 Wald
+41 78 636 50 12

mail@sanli.ch
www.sanli.ch

When I Die | Technical Rider

CONTENT

1. General Information
2. Stage
3. Sound
4. Light
5. Dressing Rooms / Miscellaneous

1. GENERAL INFORMATION

Information about the Play

Duration: 75 minutes without a break
Involved Persons: 2 Actors, 3 Musicians, 2 Technicians (Light & Sound)
Other Persons: 1 Director, 1 Tourmanager

We will travel at most with 9 persons

Contact

Light

Li Sanli
mobil: +41 78 636 50 12
mail@sanli.ch

Sound

Martin Hofstetter
mobil: +41 79 222 89 86
martin@ho-fi-ton.ch

Tourmanagement

Gabi Bernetta
mobil: +41 79 419 20 34
Fix: +41 440 66 07
gabi.bernetta@bernetta.net

Director/Stage

Thom Luz
mobil: +41 76 304 14 85
thomasluz@gmx.ch

Set up time

We need the day before the first performance as set up day. Rehearsals start usually on the day of the first performance at 11 a.m.

Set up Time incl. configuration of lighting and sound check ca. 6 – 8 hours.

Required Stage Hands

1 light technician / 1 soundtechnician/ 1 stagetechnician

The staff listed should be very familiar with the technical aspects of the venue.

2. STAGE

General

- We need black curtains with entrances and exits as marked in the attached plans. Keeping 1m distance between the walls and the black curtains.
- Stage floor should be black, if not we need a black dance floor.
- The sound and lighting control room has to set up with good sight lines to the stage. Acoustical contact with the stage has to be direct. From there we have to throw a bunch of flowers on stage during the show. If this is not possible from technical control, we need for every show one stage hand, that throws the flowers on stage. A short introduction will be given one hour before the show.
- The Presenter shall have parking spaces available for a small truck (7.5 t), as near to the venue as possible.
- Unless otherwise agreed, takedown is to immediately follow the last performance.
- For technical reasons it is not possible that other performances take place in the same stage area during the scheduled run of performances of When I Die.

Specials

- We need a closed room as close as possible to the stage, (could be a dressing room at least 3 x 3 meter) where we can set up a little studio, from where we broadcast live music and video to the stage. In this room we need 7 mic- - lines to the FOH and one return, as well as a dimmer channel and a video connection to the stage (BNC).
- We bring our own piano and require the service of a professional piano tuner at least before rehearsals start.

Open Flame / Special Effects

- We bring a haze machine (MDG Atme). It is important that we can run it during rehearsals under original conditions (aircondition, doors like during performance! Fire alarms off!). The hazer requires a CO2 bottle with ascending tube that has to be provided by the venue. (5l for one performance, 10l for more than one.)

Minimum Stage Dimensions

Stage Width:	10 m (minimum)
Stage Depth:	10 m (minimum)
Height to Rig:	5 m (minimum)

3. SOUND

General

During sound check we need one sound technician.

P.A.

High-class 3-Way Stereo System being able to provide an undistorted signal at an appropriate level throughout the whole venue. Preferred is Meyer Sound, L-Acoustics, d&b or equal 31-Band Equalizer at FOH for each signal path.

Delay-Lines and Center-Speaker are very welcome!

Monitoring

Two monitors on two ways flown approx. 3.5 m above ground at the upstage end. 31-Band Equalizer for each path. The monitors are fed post-fader and are also used as part of the P.A. One Return, depending on the Input-Signal fed pre-fader or post-fader to the adjoining room.

FOH

Professional Mixing-Desk with 24 mic-inputs, 4-Band (fully-) parametric Equalizer, 4 Subgroups with Insert-possibility, variable hi-pass filter, 6 Auxillaries Pre-/Post switchable per channel, Phantom-power per channel. 1 Reverb (Lexicon, TC, Yamaha) 4 Compressors (DBX, Drawmer, BSS) 1 Connection for iPod.

Digital Desks like Yamaha M7CL or CL-Serie are very welcome.

The desk must be placed in the audience. Mixing in a control room isolated from the audience is impossible for this piece.

One aux-send (post-fader) for own FX.

Adjoining room (studio)

We need an enclosed room as close as possible to the stage.

In this room we need 6 mic-lines to the FOH and one return as well as backline-power and a video connection to the stage (BNC).

Miscellaneous

We need 2 wireless instrumental mics (DPA4060, DPA4061, Sennheiser MKE1 or similar)

Backline-power stage left, stage right and at the upstage-end(safeguarded!) Microphones and stands as listed below or by agreement.

Multicore and enough xlr-cables.

A friendly in-house soundtechnician, familiar with the soundsystem.

Patch

Ch	Input	Mic	Stand	Insert	Place
1	Piano	Wireless	-	-	Stage
2	Clock	Wireless	-	-	Stage
3	Wurli Stage	DI Active	-	-	Stage
4	Rhodes	DI Active	-	-	Stage
5	Glassharp	KM184	Boomstand	-	Stage
6	Ondes	DI	-	-	FOH
7	Wurli 2	DI Active	-	-	Adj. Room
8	Choir	KM184	Boomstand	-	Adj. Room
9	Clarinet	SM58	Boomstand	Comp	Adj. Room
10	Viola	MD441*	Boomstand	-	Adj. Room
11	Celesta	SM57	Boomstand	-	Adj. Room
12	Speech	SM7*	Boomstand	Comp	Adj. Room
12					
13	Reverb L				FOH
14	Reverb R				FOH
15	FX L*				FOH
16	FX R*				FOH

* = Provided by „When I die“

4. LIGHTING

General

We bring our own lightboard (ETC ION) with us and also the 12 Floodlights in the lightplot (channels 19-29).

The venue should provide the following material:

Number	Item
18	Zoom Profile 25/50°, for Ex. ETC Source 4
3	1KW PCs, for Ex. Robert Juliat with Barndoors
1	Tripod (for 1 PC placed in the “studio”)
1	Dimmerchannel in the “studio” next to the stage

When I Die | Technical Rider

Plan all Layers

When I die

Thom Luz

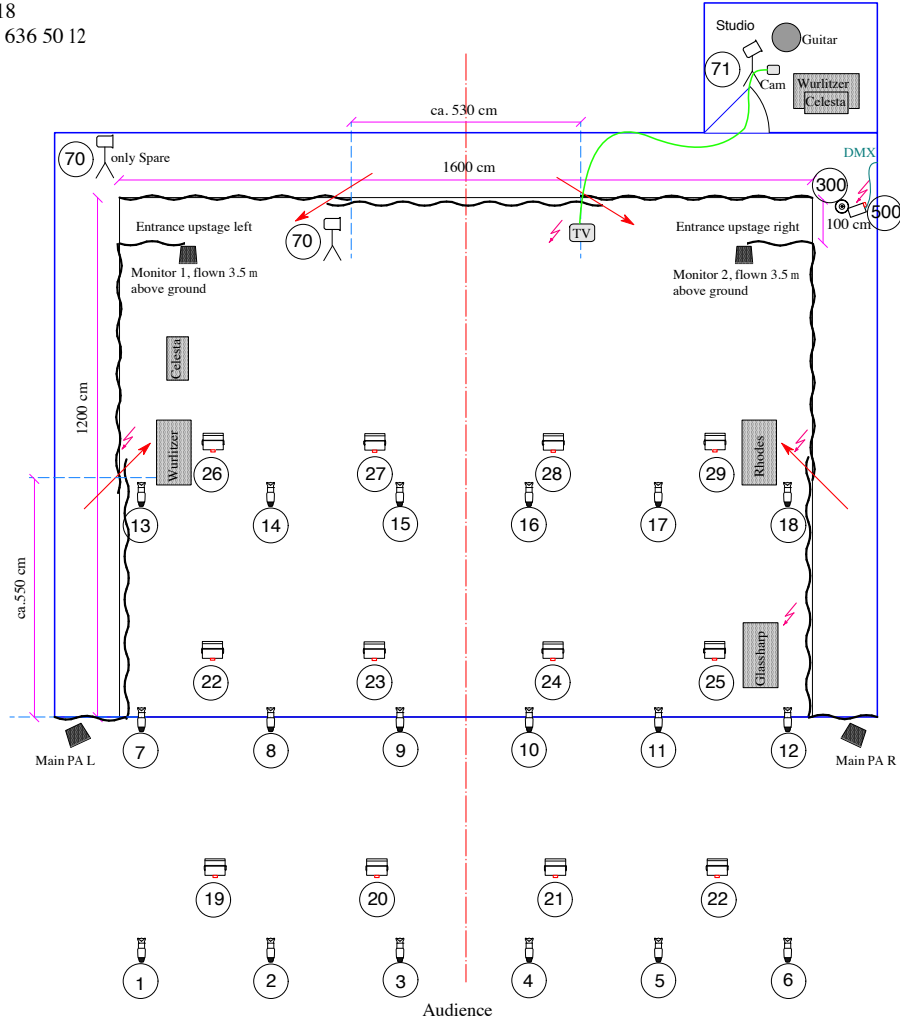
Plan Stage, Lights, Sound

Mst. 1:100 auf A3 hoch

28. Oktober 2018

Li Sanli +41 78 636 50 12

mail@sanli.ch



Legend

Stage:

- black curtains
- stage area (inclusive possible studio area)
- entrances through curtain slots

Lights, DMX and Fog:

Provided by the venue:

- ETC S4 Zoom 25/50°, 750 W, 18 pcs.
- Robert Juliat PC 1000 W with barndoors, 3 pcs.
1 stand for spot in the studio
- direct current 230V, T13 or shuko plug
- DMX 5-pin

Provided by the company:

- Flood with barndoor, 1000 W, 12 pcs.
- 2 rolling stands (1 is spare) for PC on stage
- MDG Hazer Atme
- Ventilator

Sound and Video:

Provided by the venue:

Main PA, Monitoring, Microphones according to plan and factsheet.

- BNC-Cable from studio to TV (+ 10 m, because TV is moved).

Provided by the company

all instruments, microphones according to list (point 3).
TV.

For Subtitles: Powerful beamer and dark board to project text on.

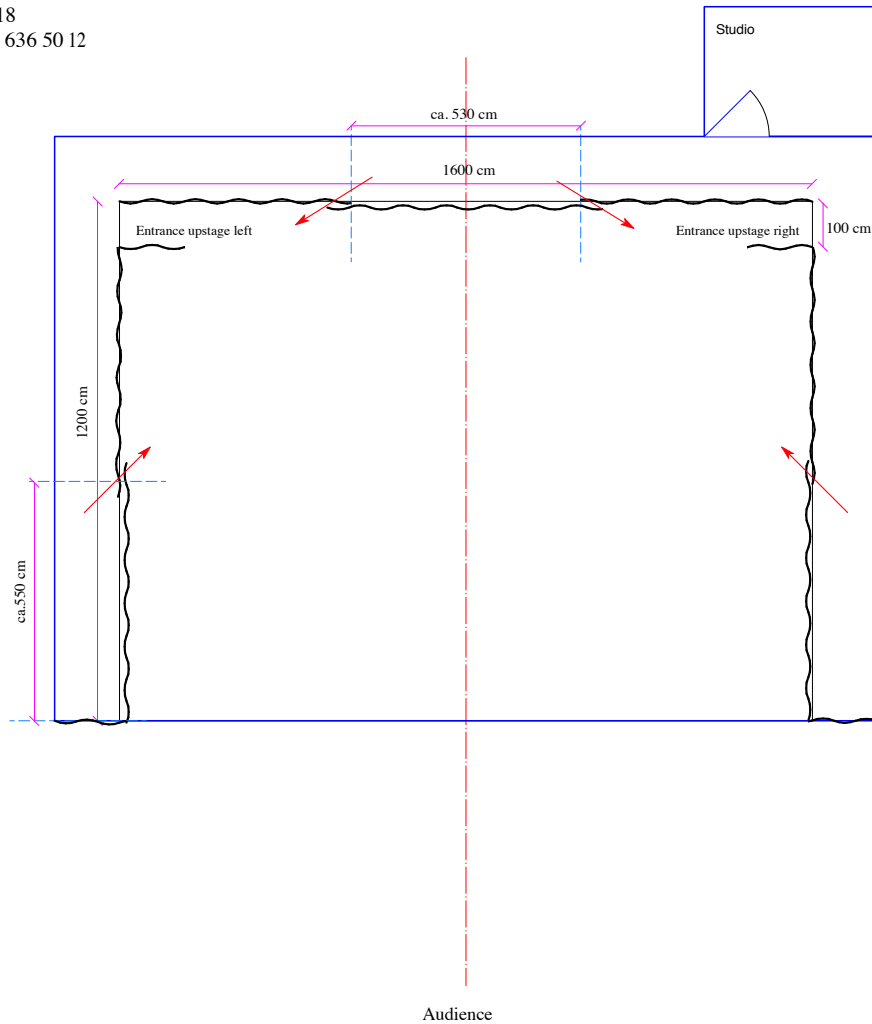
When I Die I Technical Rider

Plan Stage and curtains

When I die

Thom Luz

Plan Stage, Lights, Sound
 Mst. 1:100 auf A3 hoch
 28. Oktober 2018
 Li Sanli +41 78 636 50 12
 mail@sanli.ch



Legend

Stage:

- black curtains
- stage area (inclusive possible studio area)
- entrances through curtain slots

Lights, DMX and Fog:

Provided by the venue:

- ETC S4 Zoom 25/50°, 750 W, 18 pcs.
- Robert Juliat PC 1000 W with barndoors, 3 pcs.
1 stand for spot in the studio
- direct current 230V, T13 or shuko plug
- DMX 5-pin

Provided by the company:

- Flood with barndoor, 1000 W, 12 pcs.
- 2 rolling stands (1 is spare) for PC on stage
- MDG Hazer Atme
- Ventilator

Sound and Video:

Provided by the venue:

Main PA, Monitoring, Microphones according to plan and factsheet.

- BNC-Cable from studio to TV (+ 10 m, because TV is moved).

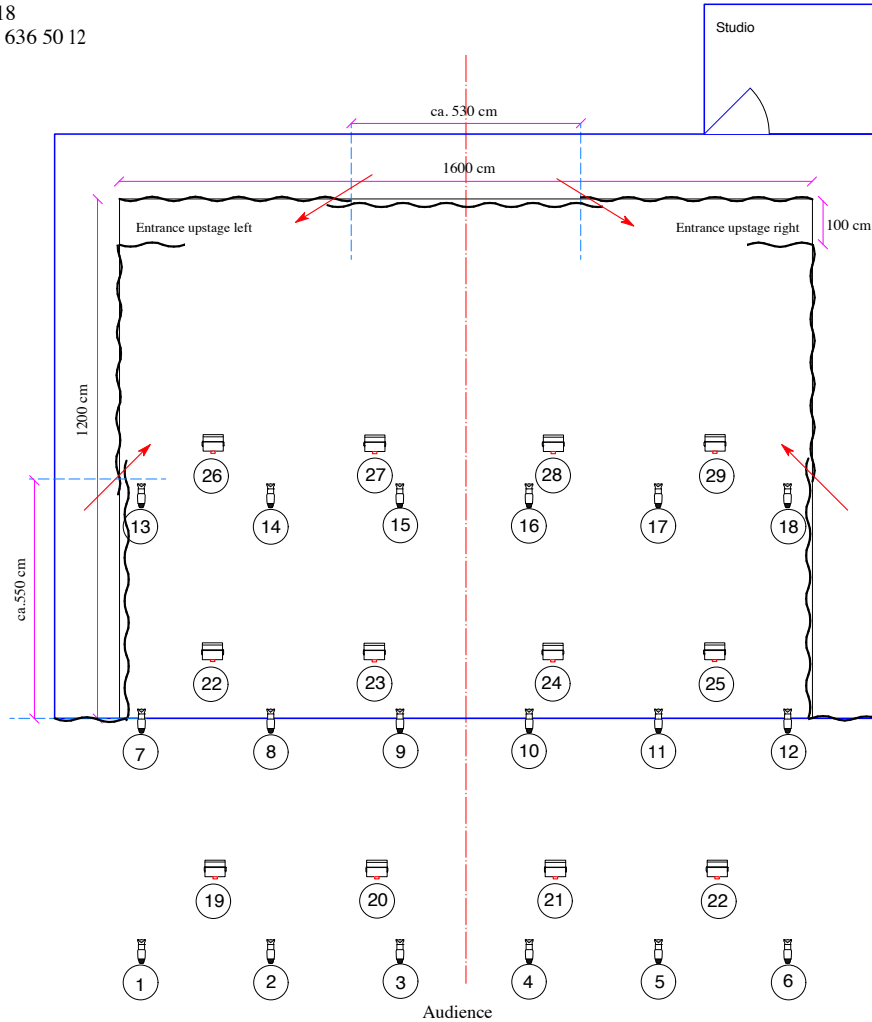
For Subtitles: Powerful beamer and dark board to project text on.

Provided by the company

all instruments, microphones according to list (point 3).
TV.

When I die
Thom Luz

Plan Stage, Lights, Sound
Mst. 1:100 auf A3 hoch
28. Oktober 2018
Li Sanli +41 78 636 50 12
mail@sanli.ch



Legend

Stage:

- black curtains
- stage area (inclusive possible studio area)
- entrances through curtain slots

Lights, DMX and Fog:

Provided by the venue:

- ETC S4 Zoom 25/50°, 750 W, 18 pcs.
- Robert Juliat PC 1000 W with barndoors, 3 pcs.
1 stand for spot in the studio
- direct current 230V, T13 or shuko plug
- DMX 5-pin

Provided by the company:

- Flood with barndoor, 1000 W, 12 pcs.
- 2 rolling stands (1 is spare) for PC on stage
- MDG Hazer Atme
- Ventilator

Sound and Video:

Provided by the venue:

Main PA, Monitoring, Microphones according to plan and factsheet.

- BNC-Cable from studio to TV (+ 10 m, because TV is moved).

Provided by the company

all instruments, microphones according to list (point 3).
TV.

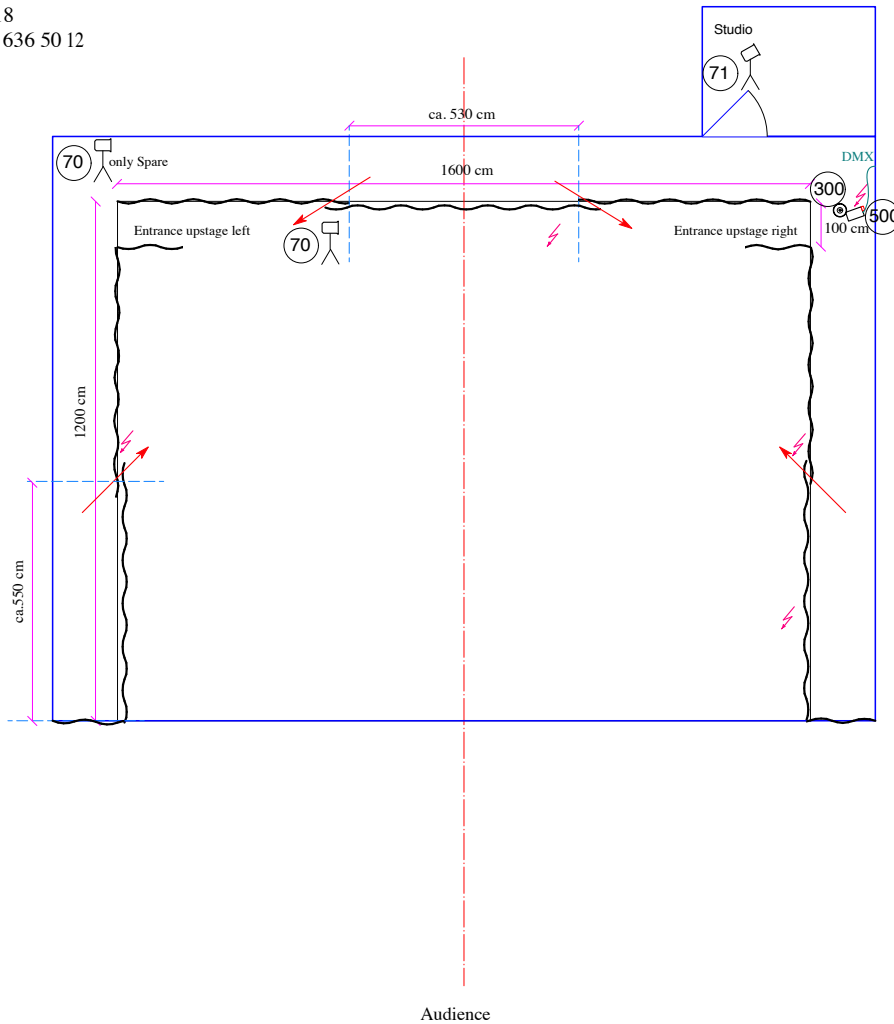
For Subtitles: Powerful beamer and dark board to project text on.

When I Die I Technical Rider

Plan Lights, Power and DMX Floor

When I die
Thom Luz

Plan Stage, Lights, Sound
Mst. 1:100 auf A3 hoch
28. Oktober 2018
Li Sanli +41 78 636 50 12
mail@sanli.ch



Legend

- Stage:**
- black curtains
 - stage area (inclusive possible studio area)
 - entrances through curtain slots

Lights, DMX and Fog:

Provided by the venue:

- ETC S4 Zoom 25/50°, 750 W, 18 pcs.
- Robert Juliat PC 1000 W with barndoors, 3 pcs.
1 stand for spot in the studio
- direct current 230V, T13 or shuko plug
- DMX 5-pin

Provided by the company:

- Flood with barndoor, 1000 W, 12 pcs.
- 2 rolling stands (1 is spare) for PC on stage
- MDG Hazer Atme
- Ventilator

Sound and Video:

Provided by the venue:

Main PA, Monitoring, Microphones according to plan and factsheet.

- BNC-Cable from studio to TV (+ 10 m, because TV is moved).

Provided by the company

all instruments, microphones according to list (point 3).
TV.

For Subtitles: Powerful beamer and dark board to project text on.

Plan Sound and Video

When I die

Thom Luz

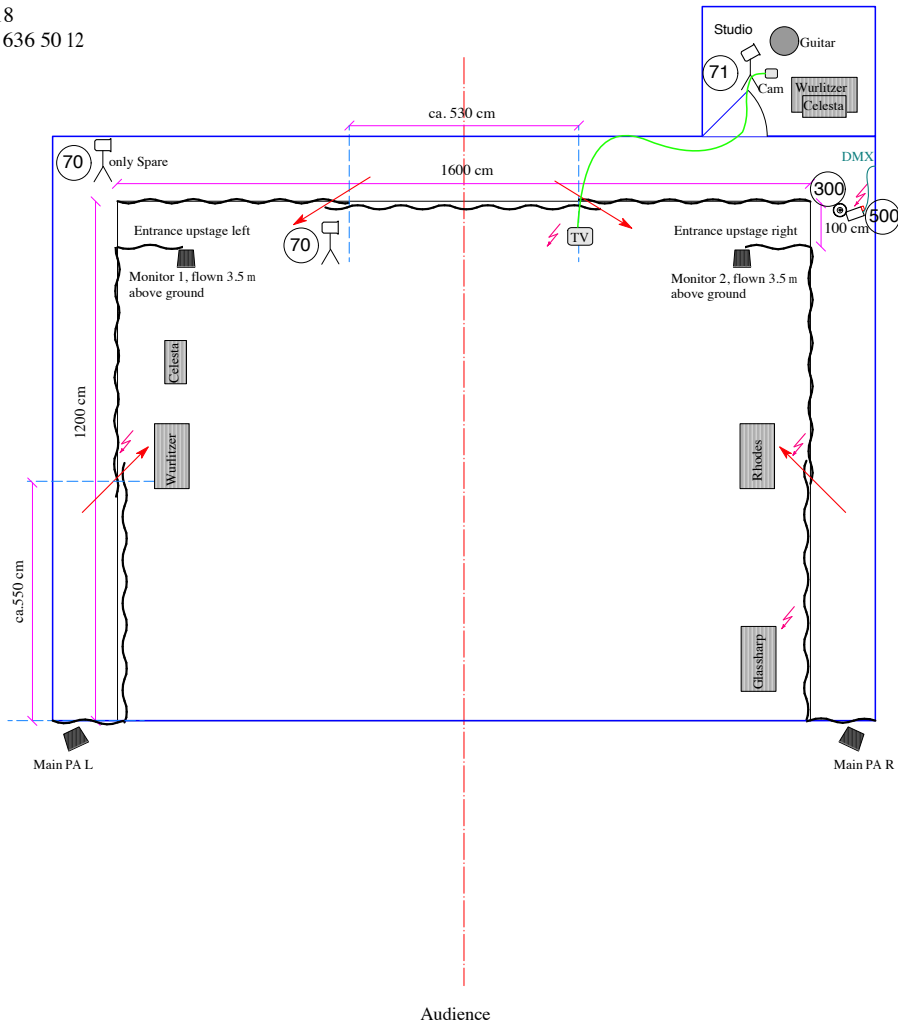
Plan Stage, Lights, Sound

Mst. 1:100 auf A3 hoch

28. Oktober 2018

Li Sanli +41 78 636 50 12

mail@sanli.ch



Legend

Stage:

- black curtains
- stage area (inclusive possible studio area)
- entrances through curtain slots

Lights, DMX and Fog:

Provided by the venue:

- ETC S4 Zoom 25/50°, 750 W, 18 pcs.
- Robert Juliat PC 1000 W with barndoors, 3 pcs.
1 stand for spot in the studio
- direct current 230V, T13 or shuko plug
- DMX 5-pin

Provided by the company:

- Flood with barndoor, 1000 W, 12 pcs.
- 2 rolling stands (1 is spare) for PC on stage
- MDG Hazer Atme
- Ventilator

Sound and Video:

Provided by the venue:

Main PA, Monitoring, Microphones according to plan and factsheet.

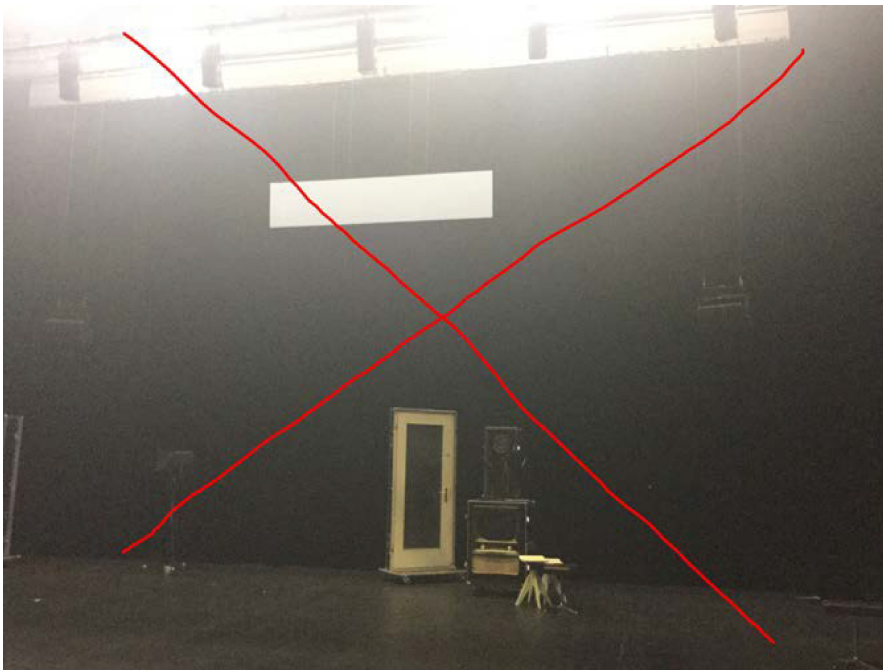
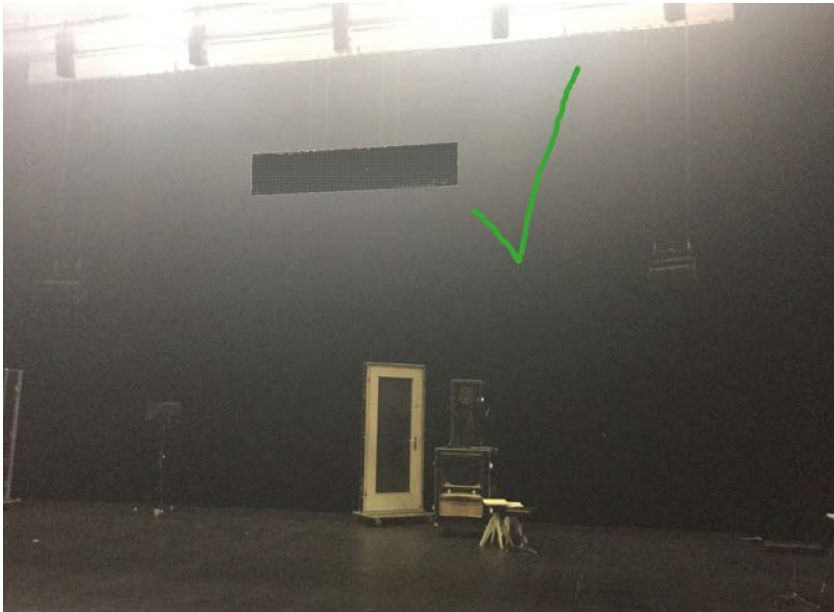
- BNC-Cable from studio to TV (+ 10 m, because TV is moved).

For Subtitles: Powerful beamer and dark board to project text on.

Provided by the company

all instruments, microphones according to list (point 3).
TV.

5. SUBTITLES



If there are subtitles planned, the venue should provide a strong beamer (think of the haze) and a dark board (see pictures) to beam on. The dark board should hang in the background (can be on the backdrop, around 4 m above the floor). We can send you the subtitles (keynote-file) in advance.

If you cannot provide one of our requirements, please contact us. We usually find a solution for everything, if we're informed in time.

This means BEFORE we arrive at the venue!

6. DRESSING ROOMS / MISCELLANEOUS

- During the entire stay – from day-of-arrival to day-of-departure – two lockable dressing rooms with clean and well-maintained toilets and showers are to be available.
- During set up and on performance days please have sufficient mineral water and an assortment of fresh fruit available.
- During the entire scheduled run of performances laundry facilities for washing the costumes are to be available, as well as access to an iron and ironing board.
- Cleaning supplies for cleaning stage and stage floor.